



For Translation Purposes Only

December 24, 2015

For Immediate Release

Issuer of real estate investment trust securities:
Invesco Office J-REIT, Inc.
6-10-1, Roppongi, Minato-ku Tokyo
Yoshifumi Matsumoto, Executive Director
(TSE code: 3298)

Asset management company:
Invesco Global Real Estate Asia Pacific, Inc.
Yasuyuki Tsuji, Representative in Japan
Inquiries: Hiroto Kai, Head of Portfolio Management Department
TEL. +81-3-6447-3395

Notice Concerning Change of Organization and Appointment of Important Employee of the Asset Management Company

Invesco Office J-REIT, Inc. announces that Invesco Global Real Estate Asia Pacific, Inc. (hereinafter referred to as the "Asset Management Company"), to which the Investment Corporation entrusts asset management operations, resolved to change the organization and appoint an important employee of the Asset Management Company at a meeting of the board of directors today. Details are as follows.

1. Change of Organization

(1) Details of Change

To further strengthen asset management operation, the Asset Management Company newly appoints Head of Acquisitions (Executive Officer) who supervises both Investment Department and Deal Sourcing and Acquisitions Department. Director of Investment Division gives orders and instructions to Head of Acquisitions, and Head of Acquisitions reports to Director of Investment Division. Regarding Asset Management Department, Director of Investment Division controls it directly as before. According to the appointment of Head of Acquisitions, the organizational structure of the Asset Management Company has been changed. Appendix 2 shows the organizational structure of the Asset Management Company before and after the change.

(2) Date of Change

January 1, 2016

2. Appointment of Important Employee

Name	Title
Yasuhito Inoue	Executive Officer Head of Acquisitions

(The career summary of the appointed Head of Acquisitions (Executive Officer) is as set forth in the Appendix 1 hereto.)

In addition, notification of this change as required under the Financial Instruments and

Exchange Act, the Building Lots and Buildings Transaction Business Act and any other applicable laws, rules and regulations will be made according thereto.

- * This material will be distributed to the Kabuto Club, the kisha club of the Ministry of Land, Infrastructure, Transport and Tourism, and the kisha club specializing in construction of the Ministry of Land, Infrastructure, Transport and Tourism.
- * Website address for the Investment Corporation: <http://www.invesco-reit.co.jp/en/>

Appendix 1: Brief Career Summary of Important Employee

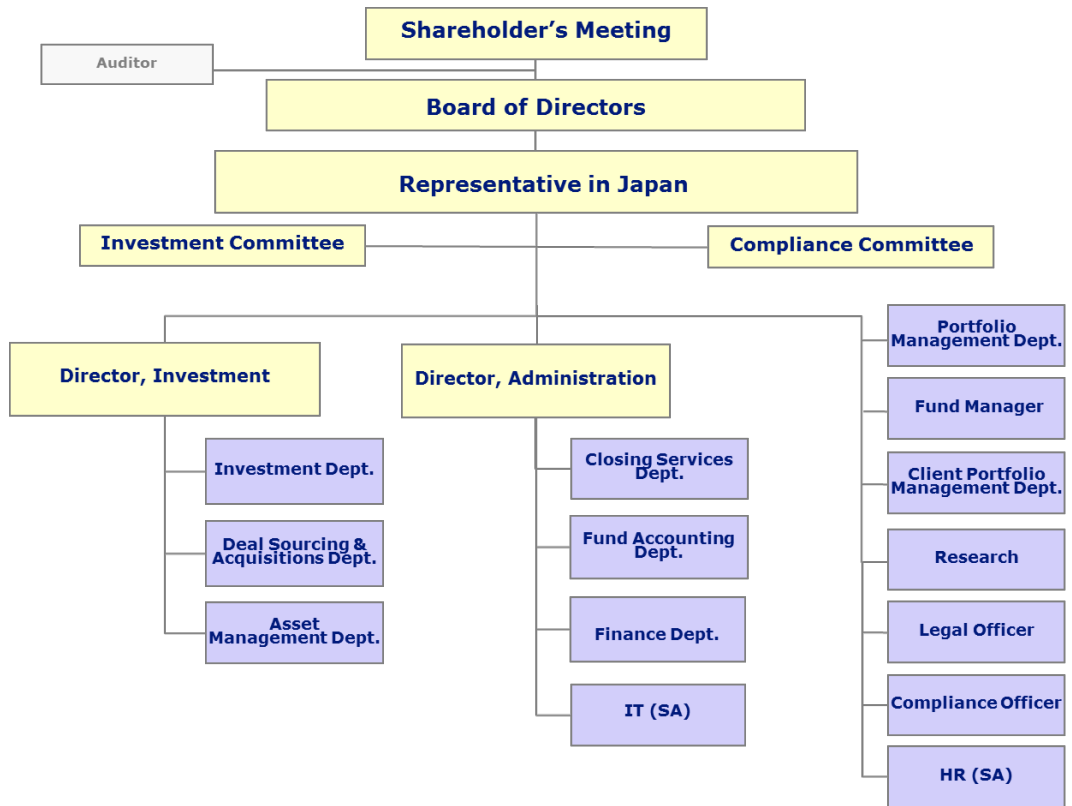
Appendix 2: Organization Chart

(Appendix 1) Brief Career Summary of Important Employee

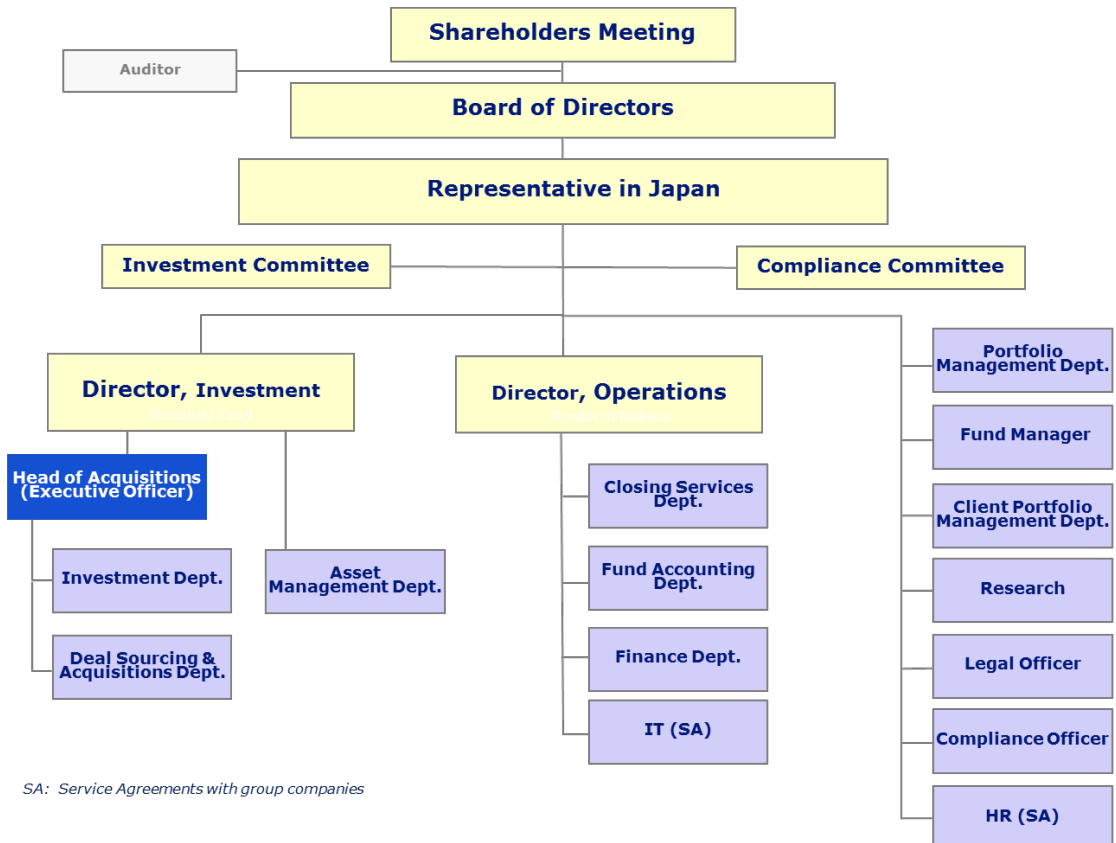
Title	Name	Brief Career Summary	
Executive Officer Head of Acquisitions	Yasuhito Inoue	April 1989	Joined Mori Building Co., Ltd.
		March 2003	Seconded to Mori Building Investment Management Co., Ltd.
		September 2005	Joined GE Real Estate Corporation (current GE Japan Corporation)
		October 2014	Joined Daiwa Real Estate Asset Management Co., Ltd.
		January 2016	Joined Invesco Global Real Estate Asia Pacific, Inc. Appointed as Head of Acquisitions (Executive Officer) (Scheduled)

(Appendix 2) Organization Chart

Before



After



SA: Service Agreements with group companies