



For Translation Purposes Only

March 31, 2016

For Immediate Release

Issuer of real estate investment trust securities:
Invesco Office J-REIT, Inc.
6-10-1, Roppongi, Minato-ku Tokyo
Yoshifumi Matsumoto, Executive Director
(TSE code: 3298)

Asset management company:
Invesco Global Real Estate Asia Pacific, Inc.
Yasuyuki Tsuji, Representative in Japan
Inquiries: Hiroto Kai, Head of Portfolio Management
Department
TEL. +81-3-6447-3395

Notice Concerning Change of Organization and Change in Important Employee of
the Asset Management Company

Invesco Office J-REIT, Inc. (hereinafter referred to as the "Investment Corporation") announces that Invesco Global Real Estate Asia Pacific, Inc. (hereinafter referred to as the "Asset Management Company"), to which the Investment Corporation entrusts asset management operations, resolved to change the organization and change an important employee of the Asset Management Company at a meeting of the board of directors today. Details are as follows.

1. Change of Organization

(1) Details of Change

The Investment Department and the Deal Sourcing and Acquisition Department, both of which are in charge of real estate acquisition in the Asset Management Company, will be merged into the Investment Department. By this merger, the Asset Management Company aims not only to unify the organization and to promote the operational efficiency, but also to strengthen the asset acquisition operation. In addition; the name of the other organization will be changed. Please refer to the appendix 1 for the organization chart before and after the change, and appendix 2 for the outline of the each organization's business before and the after the change.

(2) Date of Change

April 1, 2016

(3) Change in Personnel

In accordance with the organizational change mentioned above, the Important Employee of the Asset Management Company will be changed as follows.

a) New Position of Important Employee (as of April 1, 2016)

Head of Investment Department: Masato Umino
(Current Head of Deal Sourcing and
Acquisitions Department)

b) Resigning Important Employee (as of March 31, 2016)
Head of Investment Department: Hiroshi Sugiyama

2. Change in Important Employee (as of April 1, 2016)

Other than mentioned above, there is a change in the Important Employee of the Asset Management Company.

	New	Current
Fund Manager of the Investment Corporation	Yugo Minemura	Yoshifumi Matsumoto

The career summary of the newly appointed Fund Manager of the Investment Corporation is as set forth in the Appendix 3 hereto. Yoshifumi Matsumoto, the current Fund Manager of the Investment Corporation, will continue to serve as the Executive Director of the Investment Corporation.

In addition, notification of this change as required under the Financial Instruments and Exchange Act, the Building Lots and Buildings Transaction Business Act and any other applicable laws, rules and regulations will be made according thereto.

- * This material will be distributed to the Kabuto Club, the kisha club of the Ministry of Land, Infrastructure, Transport and Tourism, and the kisha club specializing in construction of the Ministry of Land, Infrastructure, Transport and Tourism.
- * Website address for the Investment Corporation: <http://www.invesco-reit.co.jp/en/>

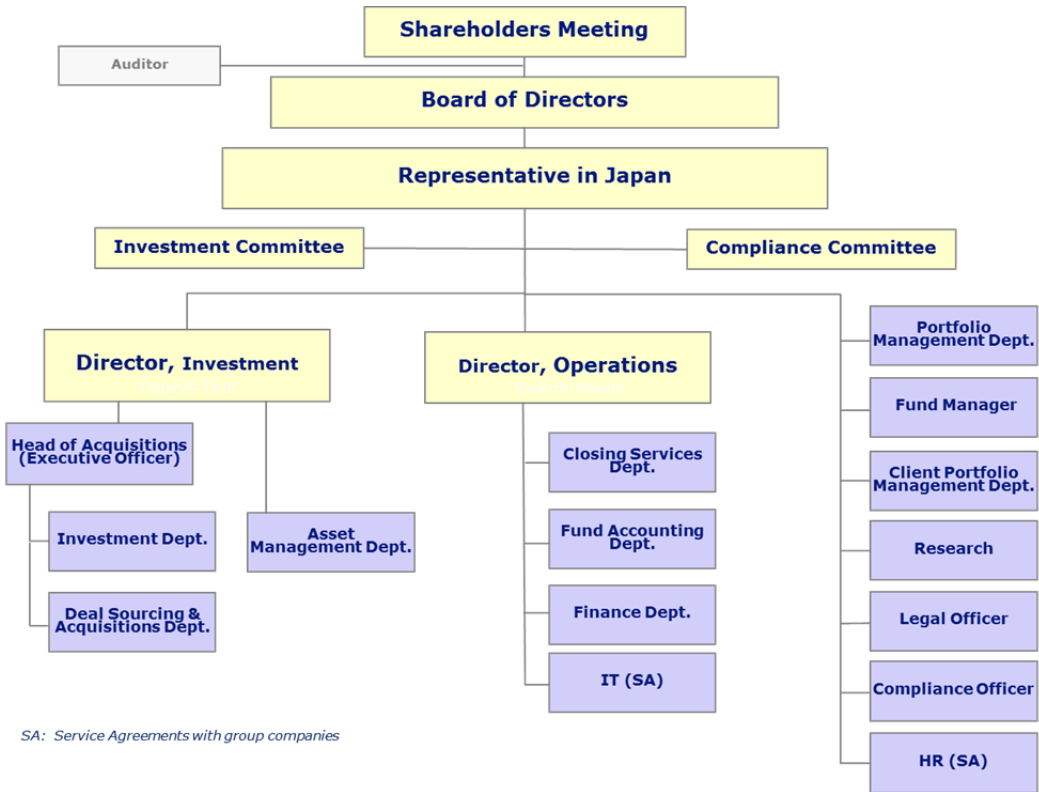
Appendix 1: Organization Chart

Appendix 2: Outline of the Business

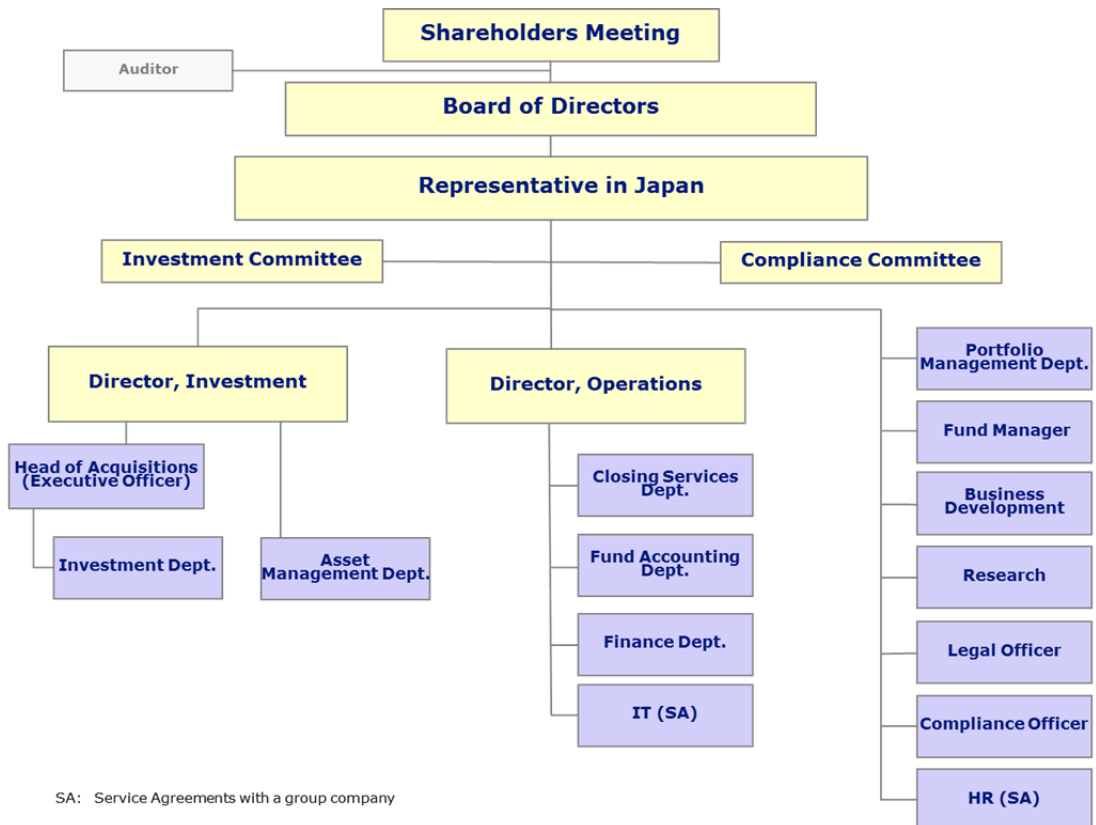
Appendix 3: Brief Career Summary of Important Employee

(Appendix 1) Organization Chart

Before



After



(Appendix 2) Outline of the Business

Before

Name of Organization	Outline of Each Organization's Business
<u>Investment Department</u>	<p><u>Acquisition of real estates</u></p> <ul style="list-style-type: none"> · <u>Pricing and cash flow underwriting</u> · <u>Due Diligence</u> · <u>Acquisition negotiation</u> · <u>Closing services</u> · <u>Preparation and drafting of the Investment Guidelines, etc. (including the Investment Guidelines, asset management plans and other policies)</u>
<u>Deal Sourcing and Acquisitions Department</u>	<p><u>Sourcing / Structuring of real estate related products</u></p> <ul style="list-style-type: none"> · <u>Sourcing</u> · <u>Acquisition negotiation</u> · <u>Preparation and drafting of acquisition plan</u> · <u>Advice on drawdown of loan</u> · <u>Structuring and proposal of real estate related products</u>
<u>Client Portfolio Management Department</u>	<p><u>Client Development / Businesses related to new products</u></p> <ul style="list-style-type: none"> · Product development · Development of new clients · Research on client's needs

After

Name of Organization	Outline of Each Organization's Business
<u>Investment Department</u>	<p><u>Sourcing / Acquisition of real estates</u></p> <ul style="list-style-type: none"> · <u>Sourcing</u> · <u>Pricing and cash flow underwriting</u> · <u>Due Diligence</u> · <u>Acquisition negotiation</u> · <u>Preparation and drafting of acquisition plan</u> · <u>Closing services</u> · <u>Preparation and drafting of the Investment Guidelines, etc. (including the Investment Guidelines, asset management plans and other policies)</u>
<u>Business Development</u>	<p><u>Client Development / Businesses related to new products</u></p> <ul style="list-style-type: none"> · Product development · Development of new clients · Research on client's needs

(Appendix 3) Brief Career Summary of Important Employee

Title	Name	Brief Career Summary	
Fund Manager of the Investment Corporation	Yugo Minemura	April, 2000	Joined Sumitomo Banking Corporation (Current Sumitomo Mitsui Banking Corporation).
		February, 2005	Joined Mizuho Securities Co., Ltd.
		March, 2008	Joined Morgan Stanley Japan Securities Co., Ltd. (Current Mitsubishi UFJ Morgan Stanley Securities Co., Ltd.)
		August, 2010	Joined Nikko Cordial Securities Inc. (Current SMBC Nikko Securities Inc.)
		March, 2016	Joined Invesco Global Real Estate Asia Pacific, Inc.
		April, 2016	Appointed as the Fund Manager of the Investment Corporation (Scheduled)