



For Translation Purposes Only

June 12, 2020

For Immediate Release

Issuer of real estate investment trust securities:

Invesco Office J-REIT, Inc.  
6-10-1, Roppongi, Minato-ku Tokyo  
Yugo Minemura, Executive Director

(TSE code: 3298)

Asset management company:

Invesco Global Real Estate Asia Pacific, Inc.  
Yasuyuki Tsuji, Representative in Japan  
Inquiries: Hiroto Kai, Head of Portfolio Management  
Department

TEL. +81-3-6447-3395

### Notice Concerning Change of Organization of the Asset Management Company

Invesco Office J-REIT, Inc. (hereinafter referred to as the "Investment Corporation") announces that Invesco Global Real Estate Asia Pacific, Inc. (hereinafter referred to as the "Asset Management Company"), to which the Investment Corporation entrusts asset management operations, resolved to change the organization of the Asset Management Company at a meeting of the board of directors which was held today. Details are as follows.

#### 1. Change of organization

##### (1) Details of change

- a. For the purpose of strengthening the asset management operational structure of the Asset Management Company, the functions of Legal, Security Management and Technology which are entrusted to a group company are to be transferred to the supervision of the Representative in Japan from the Director, Operations.
- b. Sustainability Committee, which is already operating, is to be positioned as one of the committees in the organization rules of the Asset Management Company to strengthen measures taken by the Asset Management Company regarding ESG.

Please refer to the appendix for the organization chart before and after the change.

##### (2) Date of Change

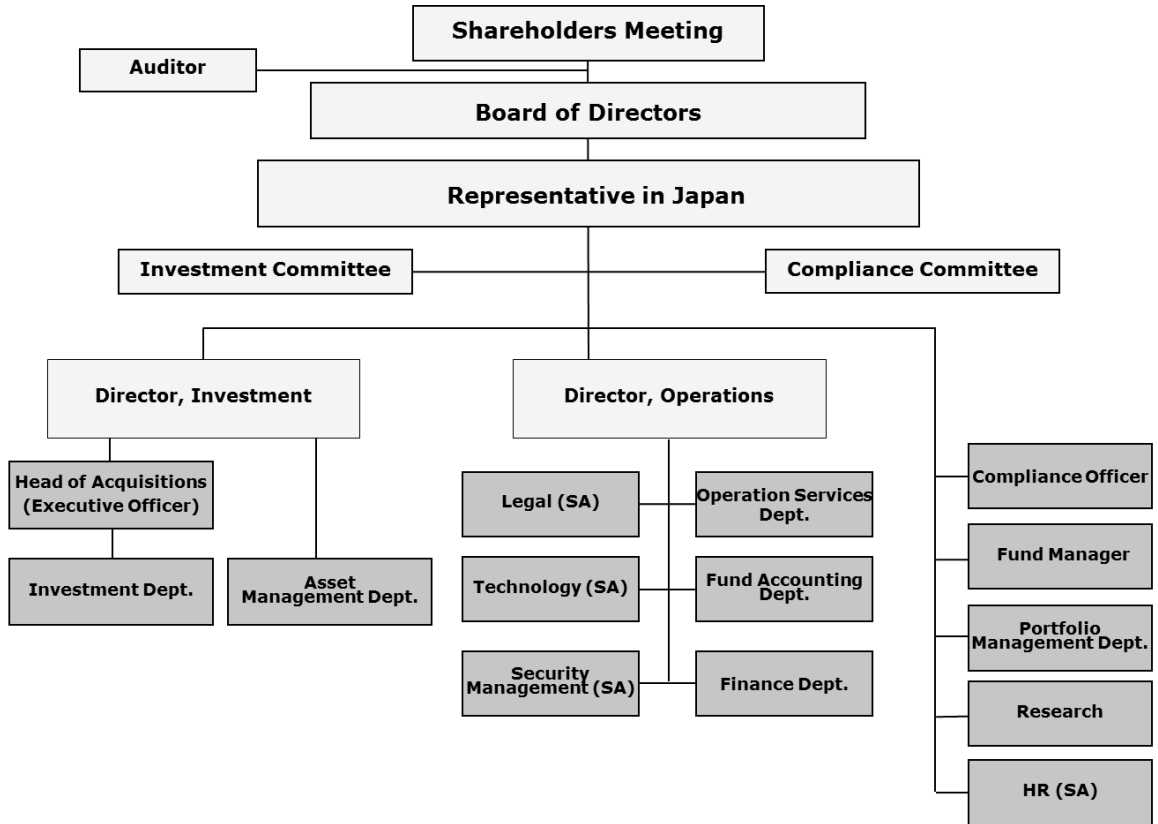
June 25, 2020

Notification of these change as required under the Financial Instruments and Exchange Act, the Building Lots and Buildings Transaction Business Act and any other applicable laws, rules and regulations will be made according thereto.

\* Website address for the Investment Corporation: <http://www.invesco-reit.co.jp/en/>

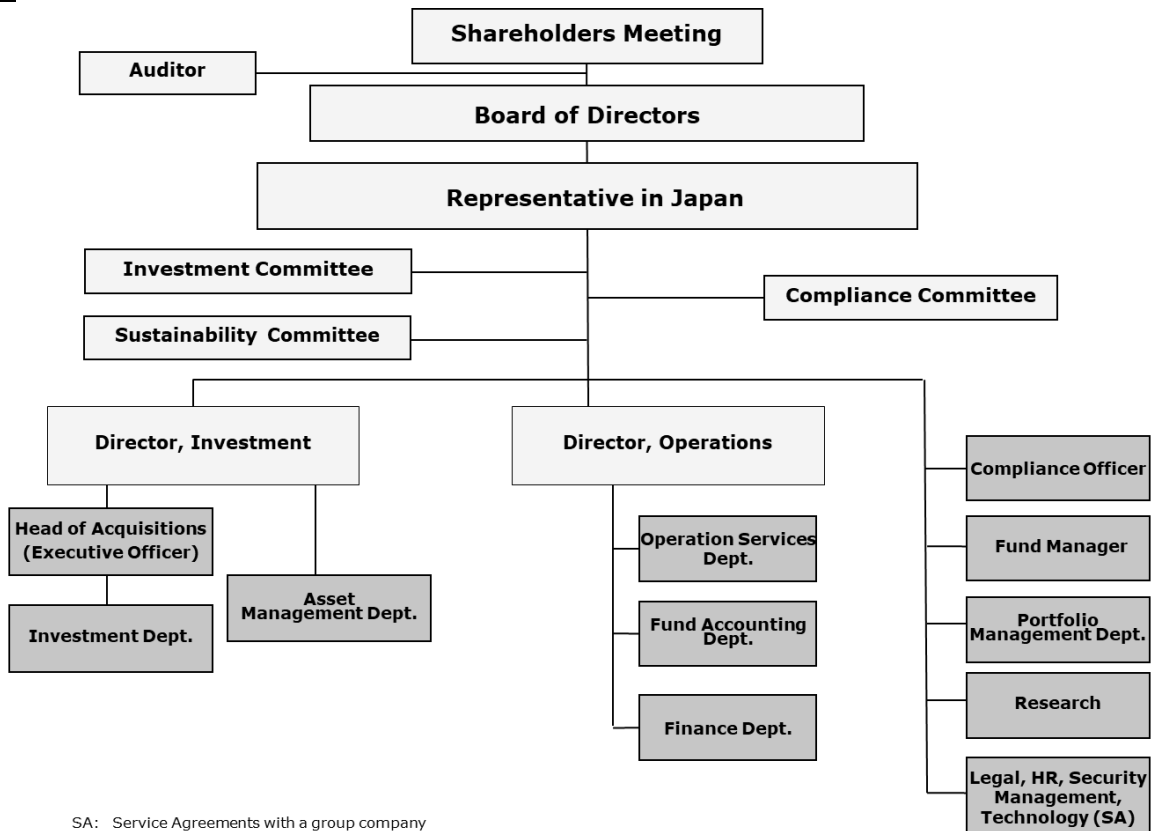
(Appendix) Organization Chart

Before



SA: Service Agreements with a group company

After



SA: Service Agreements with a group company