



For Translation Purposes Only

September 1, 2015

For Immediate Release

Issuer of real estate investment trust securities:  
Invesco Office J-REIT, Inc.  
6-10-1, Roppongi, Minato-ku Tokyo  
Yoshifumi Matsumoto, Executive Director  
(TSE code: 3298)

Asset management company:  
Invesco Global Real Estate Asia Pacific, Inc.  
Yasuyuki Tsuji, Representative in Japan  
Inquiries: Hiroto Kai, Head of Portfolio Management Department  
TEL. +81-3-6447-3395

Notice Concerning Change of Organization and Appointment of Important Employee  
of the Asset Management Company

Invesco Office J-REIT, Inc. announces that Invesco Global Real Estate Asia Pacific, Inc. (hereinafter referred to as the "Asset Management Company"), to which the Investment Corporation entrusts asset management operations, resolved to change the organization and appoint an important employee of the Asset Management Company at a meeting of the board of directors today. Details are as follows.

1. Change of Organization

(1) Details of Change

Whereas the Asset Management Company had previously commissioned its legal affairs to group companies pursuant to a Service Agreement, it has now resolved to appoint a "Legal Officer" to further strengthen its internal controls. With this new appointment, the Asset Management Company has revised the current division of duties within its organization. Appendix 1 contains a chart reflecting the Asset Management Company's current organization as well as an updated chart reflecting the Asset Management Company's updated organization following the appointment of the Legal Officer as mentioned above. Appendix 2 contains a summary of the responsibilities of each division of the Asset Management Company.

(2) Date of Change  
September 1, 2015

2. Appointment of Important Employee

| Name               | Title         |
|--------------------|---------------|
| Mikito Wakabayashi | Legal Officer |

(The career summary of the appointed Legal Officer is as set forth in the Appendix 3 hereto.)

In addition, notification of this change as required under the Financial Instruments and Exchange Act, the Building Lots and Buildings Transaction Business Act and any other applicable laws, rules and regulations will be made according thereto.

- \* This material will be distributed to the Kabuto Club, the kisha club of the Ministry of Land, Infrastructure, Transport and Tourism, and the kisha club specializing in construction of the Ministry of Land, Infrastructure, Transport and Tourism.
- \* Website address for the Investment Corporation: <http://www.invesco-reit.co.jp/en/>

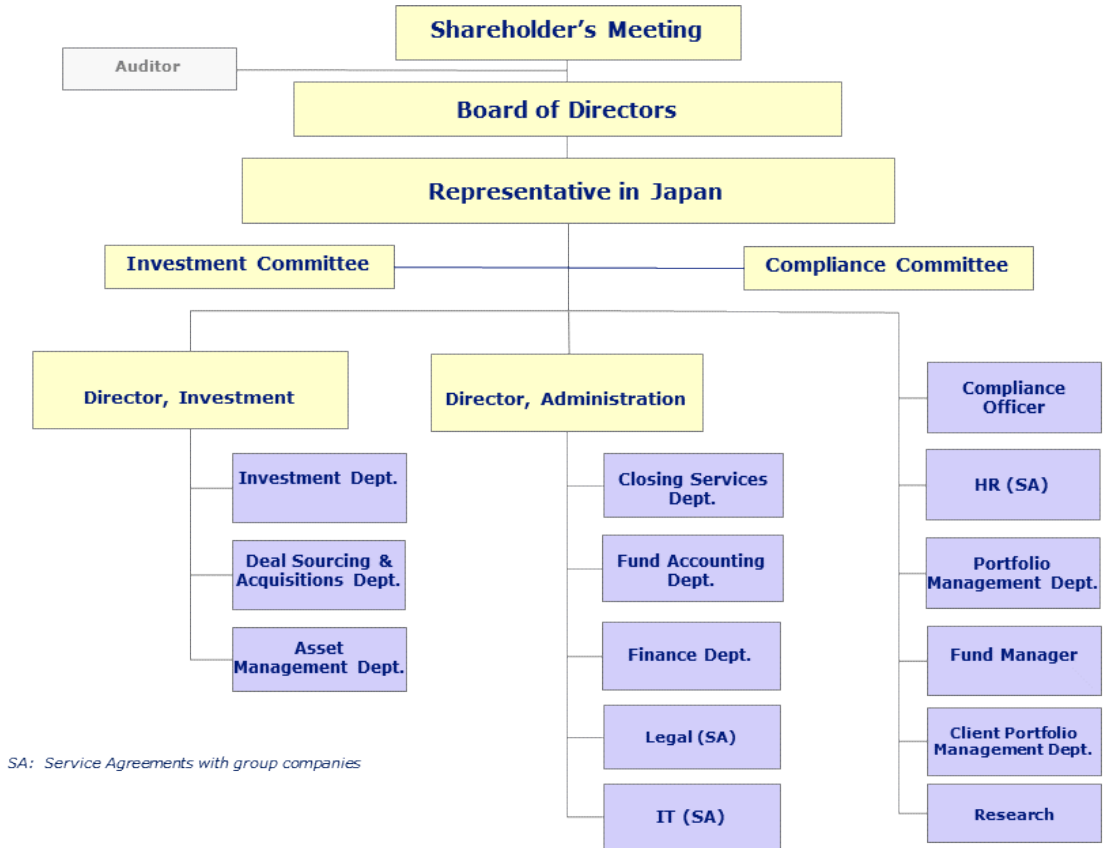
Appendix 1: Organization Chart

Appendix 2: Outline of Business

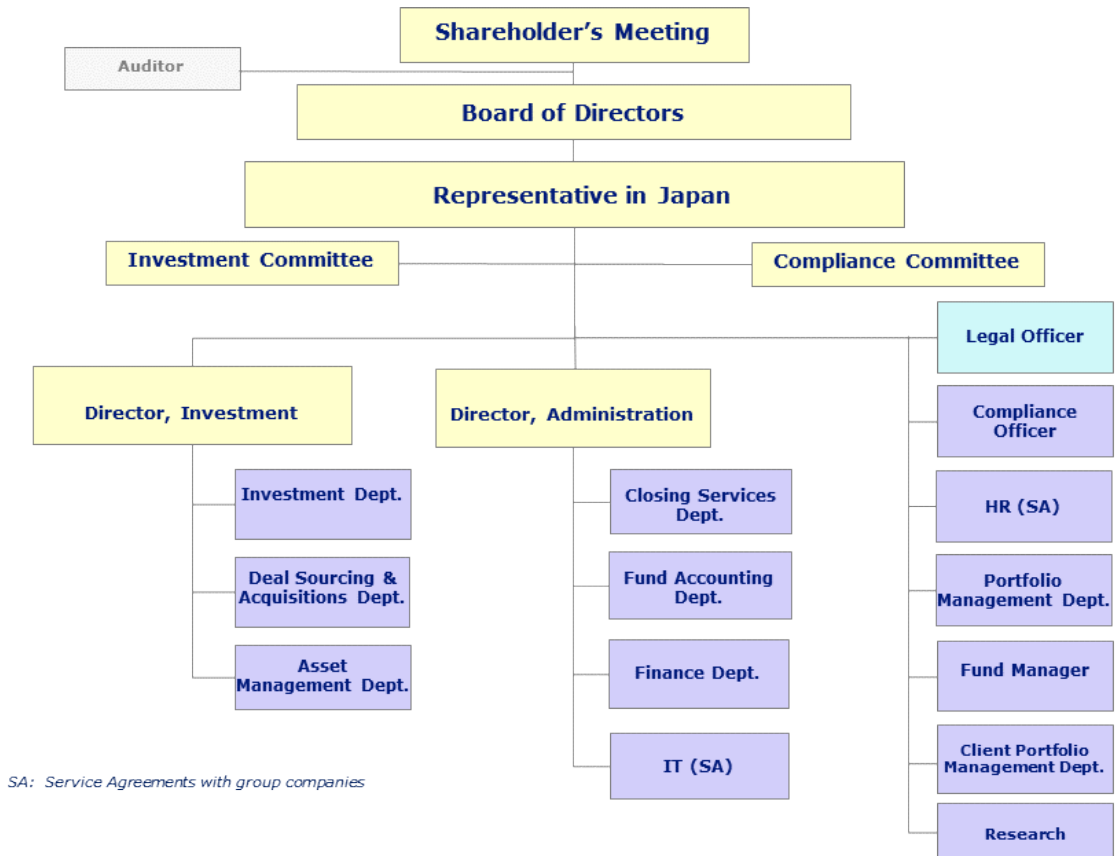
Appendix 3: Brief Career Summary of Important Employee

(Appendix 1) Organization Chart

Before



After



Before

| Name of Organization        | Outline of Each Organization's Business  |
|-----------------------------|--|
| Closing Services Department | <p><b>Closing services and legal services regarding property management</b></p> <ul style="list-style-type: none"> <li>• Preparation and management of various agreements and other documents</li> <li>• Legal research</li> <li>• Closing services</li> <li>• Research on laws and regulations and response to new laws</li> <li>• Establishment, management and liquidation of special purpose companies</li> </ul>  |
| IT / Personnel / Legal      | <p><b>IT / office management / personnel and labor affairs / corporate legal affairs (The following services are commissioned to group companies under the Service Agreement with group companies.)</b></p> <ul style="list-style-type: none"> <li>• Safety management of office</li> <li>• Drafting of crisis management plans (including emergency drills and other matters)</li> <li>• Management of fixtures and fittings</li> <li>• Management of PCs and servers</li> <li>• IT and security management</li> <li>• Personnel affairs</li> <li>• Commercial legal affairs</li> </ul> |

After

| Name of Organization        | Outline of Each Organization's Business  |
|-----------------------------|--|
| <u>Legal Officer</u>        | <p><b><u>Corporate legal affairs / legal services regarding structuring of real estate related products, etc.</u></b></p> <ul style="list-style-type: none"> <li>• <u>Arrangement of Board meetings</u></li> <li>• Preparation and review of various agreements and other documents</li> <li>• Legal research</li> <li>• Legal services regarding structuring of real estate related products</li> <li>• Interpretation and advice on laws and regulations for the operating business</li> </ul>                     |
| Closing Services Department | <p><b>Closing services and legal services regarding property management, etc.</b></p> <ul style="list-style-type: none"> <li>• Preparation and <u>review</u> of various agreements and other documents <u>for the real estate transactions</u></li> <li>• Legal research</li> <li>• Closing services</li> <li>• Establishment, management and liquidation of special purpose companies (SPC) and <u>regulatory filing for SPC</u></li> <li>• Filing and administration of corporate's important documents</li> </ul> |

|                |  |
|----------------|--|
| IT / Personnel | <b>IT / office management / personnel and labor affairs</b><br><b>(The following services are commissioned to group companies under the Service Agreement with group companies.)</b> <ul style="list-style-type: none"><li>• Safety management of office</li><li>• Drafting of crisis management plans (including emergency drills and other matters)</li><li>• Management of fixtures and fittings</li><li>• Management of PCs and servers</li><li>• IT and security management</li><li>• Personnel affairs</li></ul> |
|----------------|--|

(Appendix 3) Brief Career Summary of Important Employee

| Title         | Name               | Brief Career Summary |  |
|---------------|--------------------|----------------------|--|
| Legal Officer | Mikito Wakabayashi | December 2005        | Joined Mizuho Investors Securities Co., Ltd. (currently Mizuho Securities Co., Ltd.) |
|               |                    | December 2012        | Bar Admissions: Daini Tokyo Bar Association  |
|               |                    | September 2015       | Joined Invesco Global Real Estate Asia Pacific, Inc.                                 |